

QUARTZ DEVELOPMENT

WCallive 1.00

User Guide

WCALLIVE

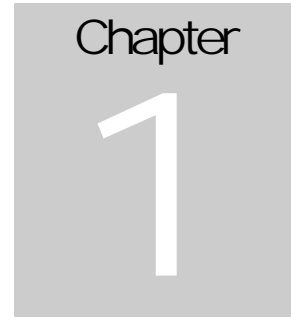
User Guide

This document covers all versions of WCaLive 1.00.

© Quartz Development
2008

Table of Contents

Introduction	2
Installation.....	3
Un-Installation	6
Obtaining and entering the permanent key	7
Configuration	9
Using	12
Synchronization Method	13



Introduction

W CalLive is a wireless synchronization client written specifically for Windows Mobile 5.0 and 6.0 based devices that allows you to synchronize your Pocket Outlook Calendar with your online Google Calendar. This can be done over WiFi or via ActiveSync with your device cradled or syncing over Bluetooth.

Installation

It is assumed that you are familiar with using a PC and Windows Mobile device and have downloaded WCalLive from our website <http://www.quartzdevelopment.com> and are ready to install it on to your device.

The software is distributed either by a device installable Cab file or via a desktop distribution through either ActiveSync or WMDC.

Start the installation process by launching the WCalLive set up application you have downloaded, please make sure your device is connected to ActiveSync before installation; this allows the CAB file to be installed on the device, see Figure 1 Make sure your device is connected.



Figure 1 Make sure your device is connected

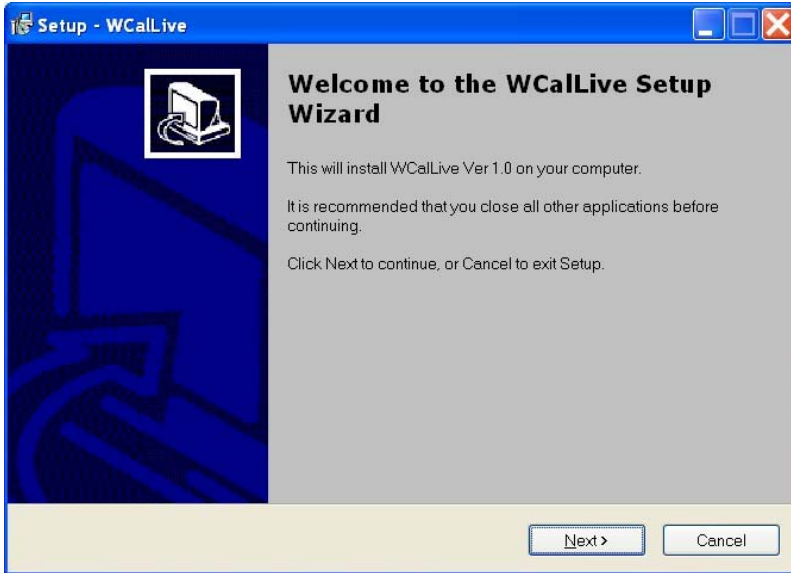


Figure 2 Installation Welcome Screen

Click next on this screen to go to the next page.

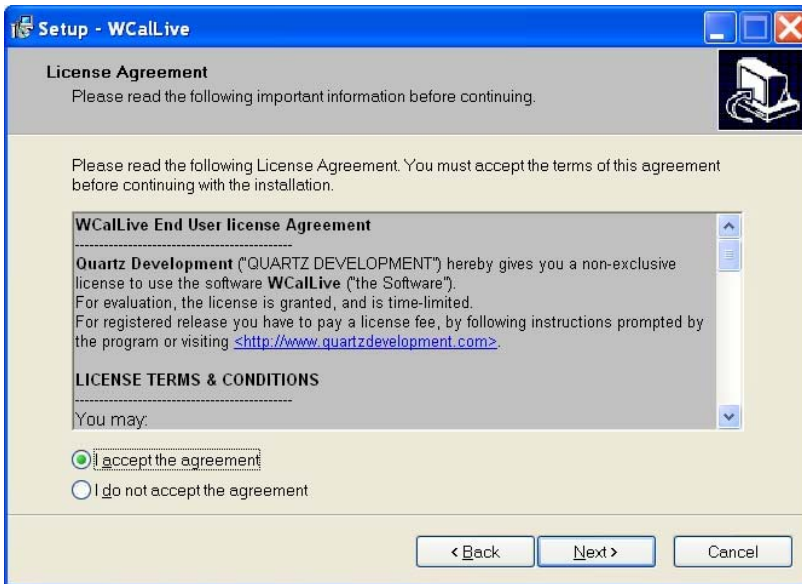


Figure 3 Installation license agreement

You need to accept the agreement before you can carry on with the installation. Click next to go on to the next screen.

There are a number of standard installation pages that follow this one such as selecting the installation directory and status screens, you can change the options on these pages and keep clicking the next button to go to the next screen.

INSTALLATION

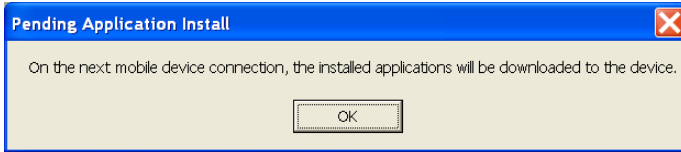


Figure 4 ActiveSync Cab installation

This prompt lets you know that the cab file will be installed onto your device and the device is not connected.

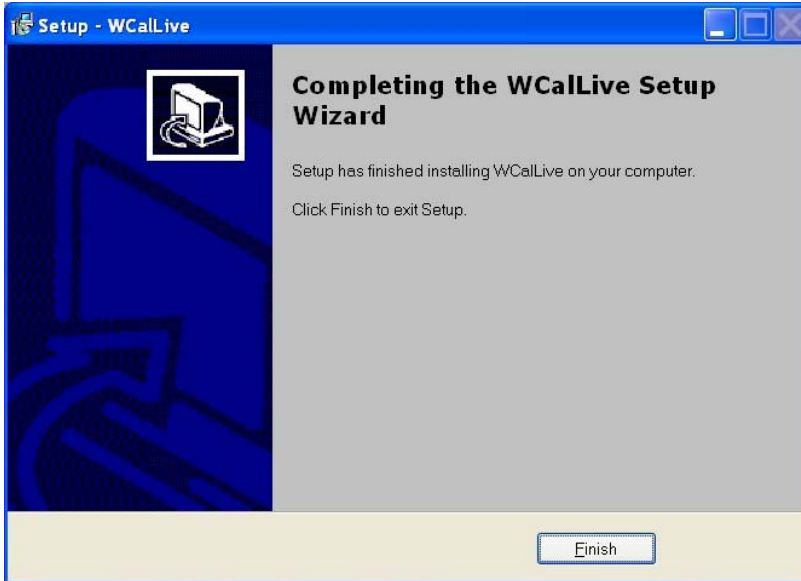


Figure 5 Installation finish page

This page lets you know that the installation has finished and WCallive has been installed. If you receive any errors during installation please try again before contacting us at support@quartzdevelopment.com.

Un-Installation

There are two ways to uninstall WCalLive from your Desktop PC.

1. Select the uninstall option for WCalLive from the start menu as you would normally.
2. Select Add and Remove from the control panel and remove WCalLive.

To uninstall WCalLive from your device launch ActiveSync and click the Tools menu then Add/Remove Programs... see Figure 6 WCalLive uninstall dialog box. The Add/Remove Programs dialog box will appear; un-select the Quartz Development WCalLive item so it is highlighted and click the Remove button. This will uninstall WCalLive from your device but leave the cab file on your desktop so that you can if need be re-install it. Click the OK button to close the dialog box.

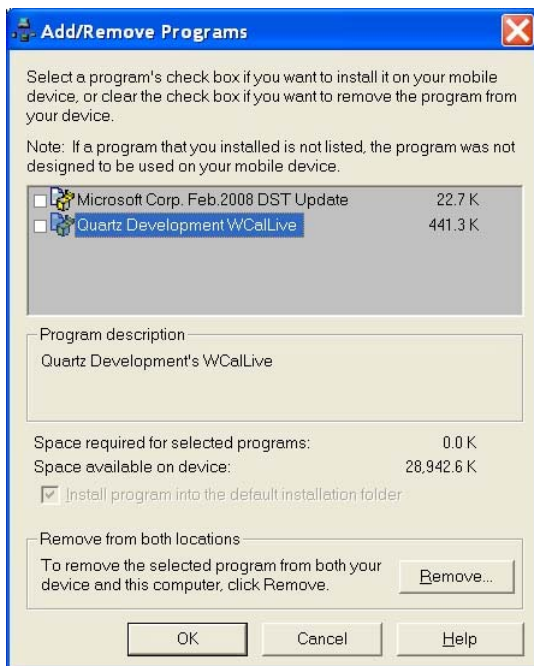


Figure 6 WCalLive uninstall dialog box

Obtaining and entering the permanent key

Launch “WCalLive” on your device as you would any other Windows Mobile application.



Figure 7 WCalLive main window

You will see the main screen in Figure 7 WCalLive main window giving you information about the status of synchronization or whether the device is connected to the Google calendar. Once you have entered a permanent key the key type in the about dialog will change to show that it is a licensed copy of WCalLive.

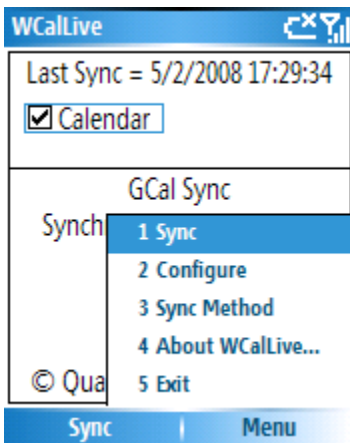


Figure 8 Main menu

If you decide to purchase WCalLive you will be given a temporary key and later a permanent key. To enter the key, launch WCalLive on your device then click the “Menu” button in the bottom right of screen then select the “Configure” item on the menu, see Figure 8 Main menu. The configuration dialog box will appear, click the “Register” tab and enter your key, see Figure 9 Registration tab.

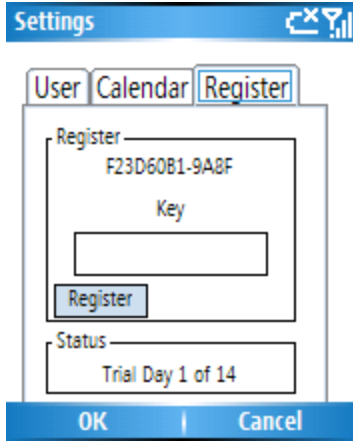


Figure 9 Registration tab

If you are running WCallive in trial mode you can see how many days of your trial period are left or if the trial period has expired on the registration dialog box.

In order to register the application you will need to supply support@quartzdevelopment.com the id displayed (in the case of Figure 9 Registration tab this is F23D60B1-9ABF) along with your purchase information.

Configuration

This section will describe how to configure and use WCalLive.

It is assumed you have read the previous chapter about Installation, and have now got WCalLive installed.

Just follow the steps below to configure WCalLive, launch WCalLive.



Figure 10 Main window

The user interface has been designed for use on large screen devices like a PDA or a small screen non touch screen phone devices.

Once the Main window appears click the “Menu” button, see Figure 8 Main menu then click the “Configure” menu item.

The Settings dialog box will appear; you will notice a number of tabs, select the “User” tab to display the user configuration, see Figure 11 User configuration

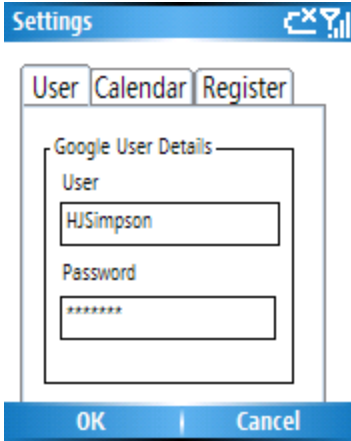


Figure 11 User configuration

Enter your Google account details that you use when logging in via a web browser, here we have used HJSimpson as the user name.

Once you have set your User information select the “Calendar” tab

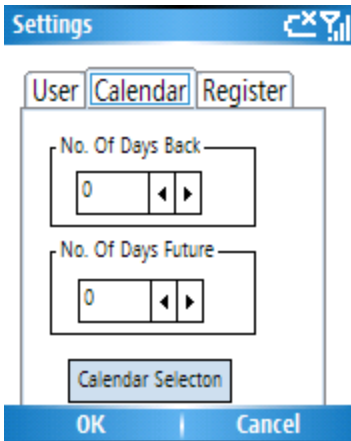



Figure 12 Calendar configuration

On this tab you can set the synchronization window, this allows you to sync only data between the number of days specified, so for instance if you set it to 30 days back and 30 days future WCallive will sync 60 days of data between your device and Google calendar.

In evaluation mode this is restricted to 30 days Past and 30 days Future. The Registered version allows 365 days Past and 365 days Future.

Please enter the number of days back and in the future you want to sync your data.

Under the synchronization window is the “Calendar Selection” button, click this so you can pick the Calendars you want to synchronize from within your Google calendar account.

Calendar Selection 

Building GCal List...

OK | Cancel

Figure 13 Building Google calendar list

Once WCalLive receives a response from Google you will see the list of available Calendars, simply select the checkbox by the Calendar(s) you want to synchronize. WCalLive will limit the number of Calendars synchronized to 5 during the synchronization process.

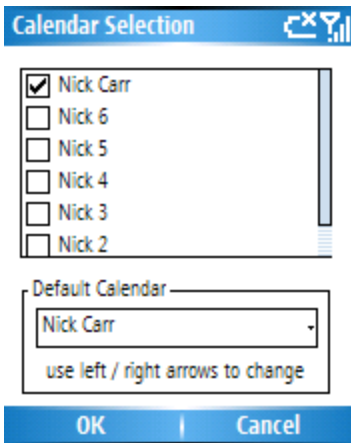


Figure 14 Calendar selection

Select the default calendar from the list; this is especially important for some phone devices that don't have the ability to specify categories during appointment creation. During synchronization any new device record that does not have a category specified will be synchronized to the default Google calendar. Fully featured devices will be able to select a particular category during appointment creation. Any appointment synchronized from a Google calendar will have the device category set to match the name of the Google calendar. Any new device appointments created within a category matching a Google calendar name will be synchronized to the Google calendar of the same name.

The Last Tab is the Registration settings. This will give you an indication of the period of the Trial and days remaining or allow you to enter your registration key, please see Chapter 2.

Once you have finished configuring WCalLive click the OK button to return to the main window.

Using

This section will describe how to use WCalLive. It is quite short as most time is spent configuring rather than using WCalLive. It is assumed you have read the previous chapter about Configuration, and have now got WCalLive configured to how you want it to work.

Once the device is connected to the internet or cradled or connected through Microsoft ActiveSync/WMDC, press the Sync button.

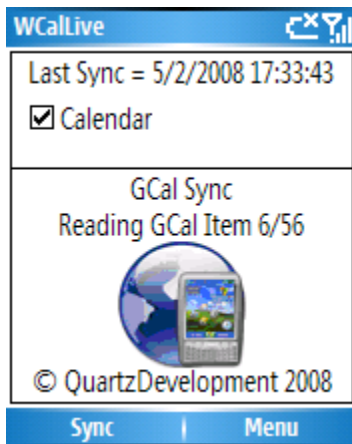


Figure 15 WCalLive main window - syncing

At times when the Google servers are very busy you may experience failures while syncing, you will be prompted with an Alert dialog box, see Figure 16 Alert dialog box and Figure 17 Aborted sync. If this happens simply Sync again and WCalLive will resume where it left off.

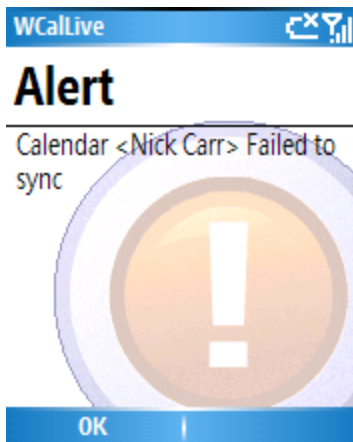


Figure 16 Alert dialog box



Figure 17 Aborted sync

Synchronization Method

WCalLive allows the user to decide what synchronization method they want to use. The default is bi-directional synchronization and if you change it to one of the other options.

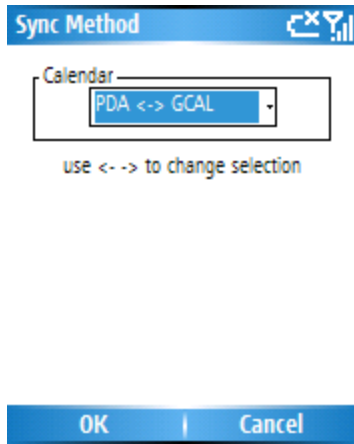


Figure 18 Sync method

Synchronization Method	Description
Bi-directional (PDA<-> GCAL)	This is the default method of synchronization. When you synchronize, the data is transferred in both directions between the Windows Mobile device and GCAL.
PDA overwrites Desktop (PDA -> GCAL)	This method of synchronization overwrites data in GCAL with data from the Windows Mobile that is within the Sync Window.
Desktop overwrites PDA (PDA <- GCAL)	This method of synchronization overwrites data on the Windows Mobile with data in GCAL that is within the Sync Window.

Table 1 Synchronization Methods

In order to correctly enter calendar entries both on the device and Google calendar it is important that you download and install the latest DST patches for your device, these can be found on the Microsoft web site.